



# EPFL XPLORE

BUILDING A ROVER FROM  
SCRATCH



# GOING BEYOND

## WHO ARE WE?

EPFL Xplore is a student association of a total of 50+ students whose aim is to build a Martian Rover to participate in international competitions. The team is made up of Bachelor and Master students from various sections of EPFL.

## WHAT COMPETITION?

We are participating this year in the European Rover Challenge, organized by the European Space Foundation and Mars Society Polska, and closely followed by the European Space Agency (ESA).



## EDUCATION

Our members are putting theoretical knowledge into practice and working together on a large scale project. They are learning important skills like teamwork or management.



## INNOVATION

at EPFL Xplore, we start from ideas and build upon them. We have an environment where people are free to have their own approach in solving complex problems.

# What are we developing?

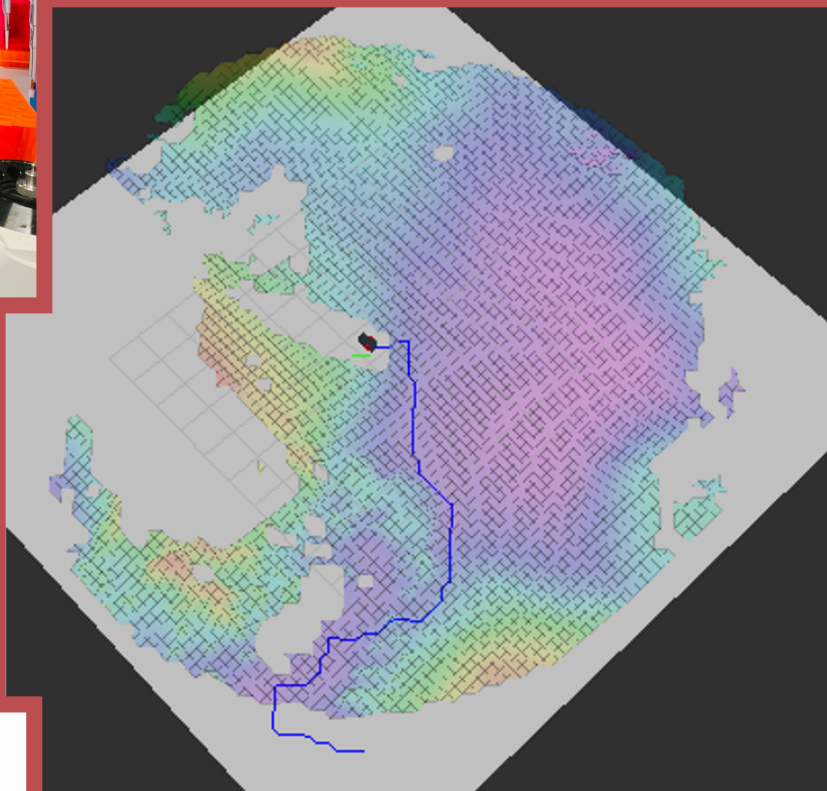


## SCIENCE

Our Rover will conduct on board soil sample analysis, ranging from mineralogy to life detection using Raman spectroscopy.

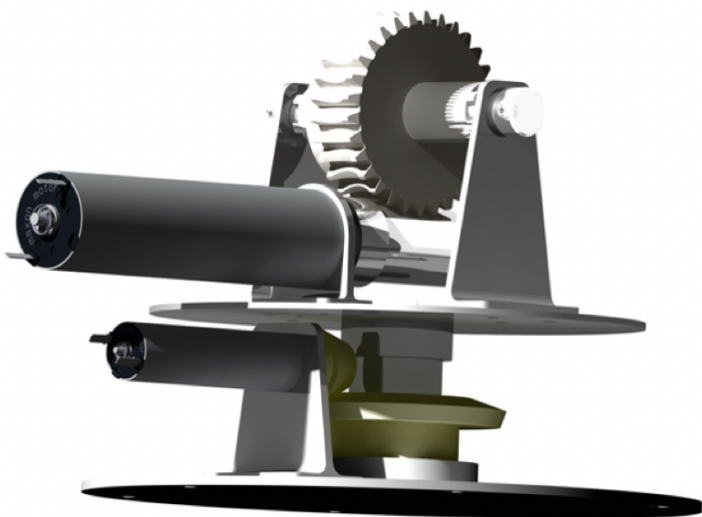
## NAVIGATION

We developed advanced algorithms enabling our Rover to analyse its surroundings and find the shortest path to the desired destination, even through challenging terrains.

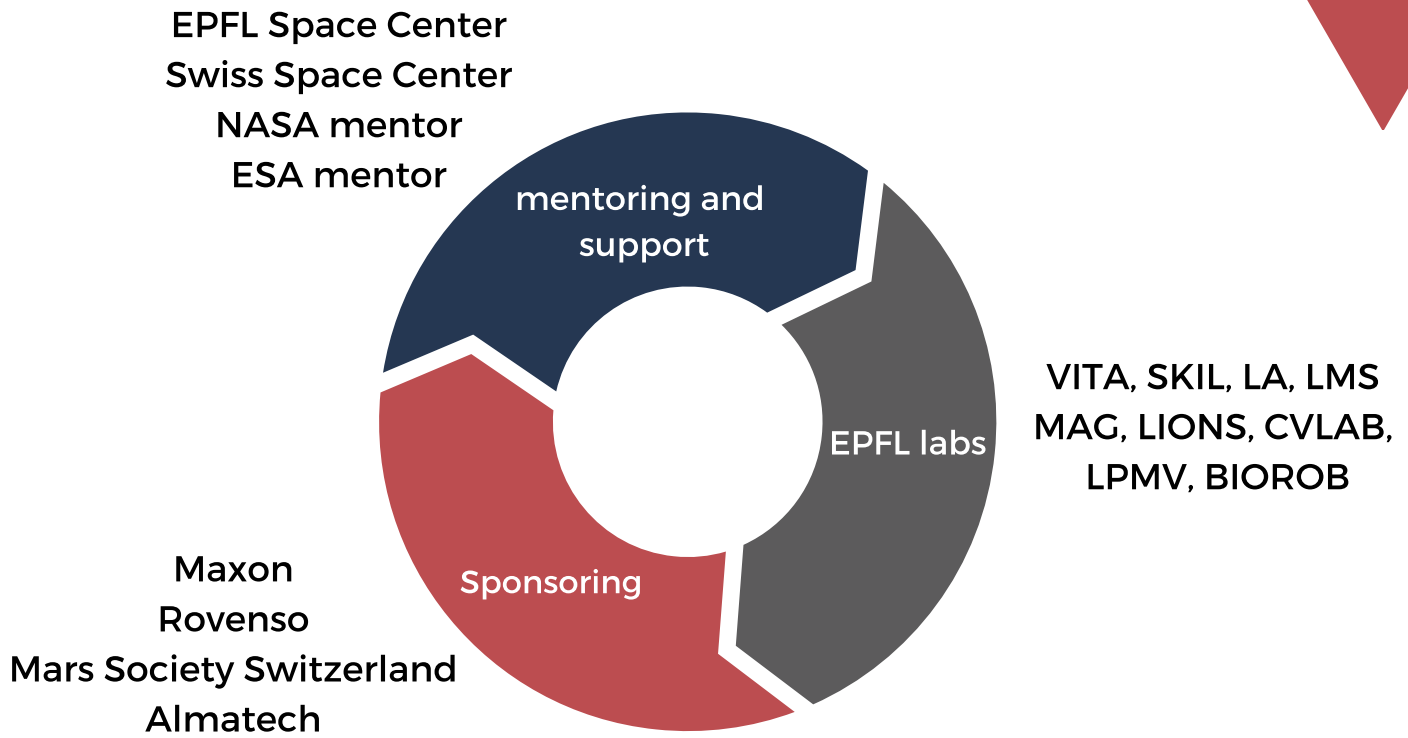


## STUDENT DESIGNED MECHANISM

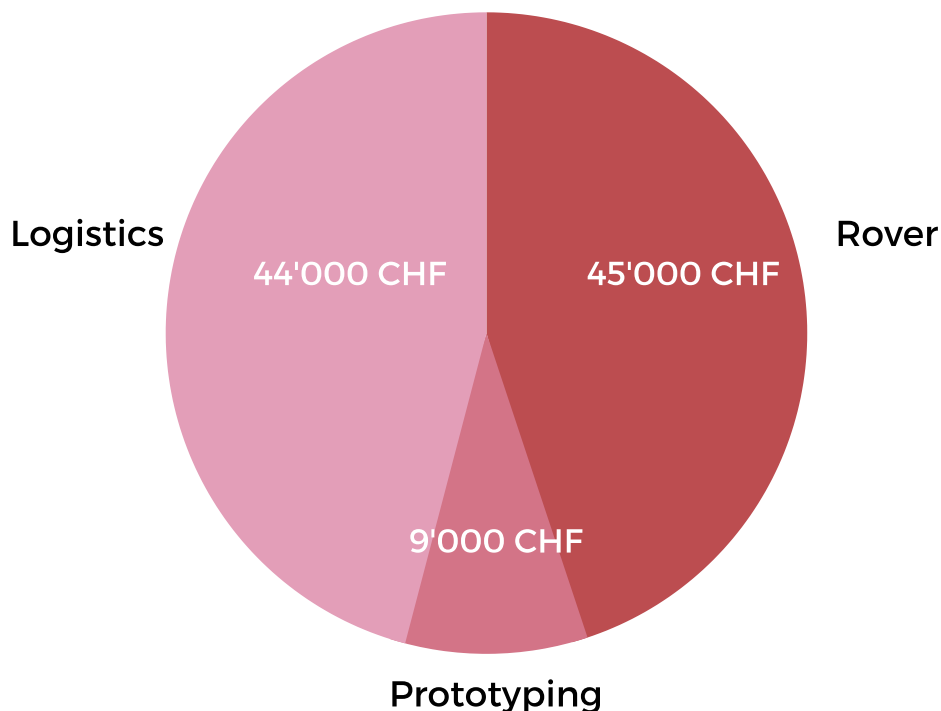
We encourage our members to develop their own mechanism. We are namely working on our own chassis, robotic arm and overall structure.



# Level of support



# Budget





# What can we offer?

## VISIBILITY

Be it on campus or during the competition, your brand will be visible during all the different events we are going to attend (Associations week, Open Days,...).

## A BRIDGE BETWEEN STUDENTS AND THE INDUSTRY

The members of our team and the students interested in our association are all future engineers that will be glad to learn more about the opportunities you can offer them.

## SPONSORING PACKAGES

Category	Main	Platinum	Gold	Silver	Bronze
Amount	> 40'000 CHF	10'000-40'000 CHF	5'000-10'000 CHF	1'000-5'000 CHF	500-1'000 CHF
On Website	Yes	Yes	Yes	Yes	Yes
On Flyers	Yes	Yes	Yes	Yes	Yes
On Promotional Video	Yes	Yes	Yes	Yes	Yes
On Rover	Big	Medium	Medium	Small	-
On Posters	Big	Big	Medium	Small	-
On Posts (Social Media)	Big	Medium	-	-	-
On PCB (Printed Circuit Board)	Yes	Yes	-	-	-
On Team T-shirts	Yes	-	-	-	-

The competition is only the first step, not the end goal. We have the ambition to make the next generation Lunar Rover and send it to the Moon in 2030.



Let's shoot for the Moon together.

Many thanks to our  
sponsors and partners!

**EPFL**



swiss  
**space center**



**eSpace  
EPFL Space  
Center**

**maxon**



**MARS SOCIETY**  
SWITZERLAND

**almatech**

For any questions: [contact@epfl-xplore.ch](mailto:contact@epfl-xplore.ch)